

A stone wall sign for the University of California, Irvine. The sign is made of light-colored rectangular stones and features the university's name in large, dark, serif letters. To the left of the main text is a circular seal. The sign is set against a background of green trees and a clear blue sky. In the foreground, there is a field of tall, green grasses.

University of California, Irvine

# Biannual Zone Crew/CERT Meeting September 27, 2023

**UCI** Division of Finance and Administration | With U • For U

# Zone Crew Expectations

---

## Topics

- How to get out (evacuations)
- Location of assembly areas
- How to direct people during evacuations
- Security Assessment update

# CERT Program

---

## What is it?

- CERT = Community Emergency Response Team
- Volunteer program that educates about disaster preparedness for the hazards that may impact your area and trains you in basic disaster response skills.



# CERT Program (cont'd)

## Topics that you will learn:

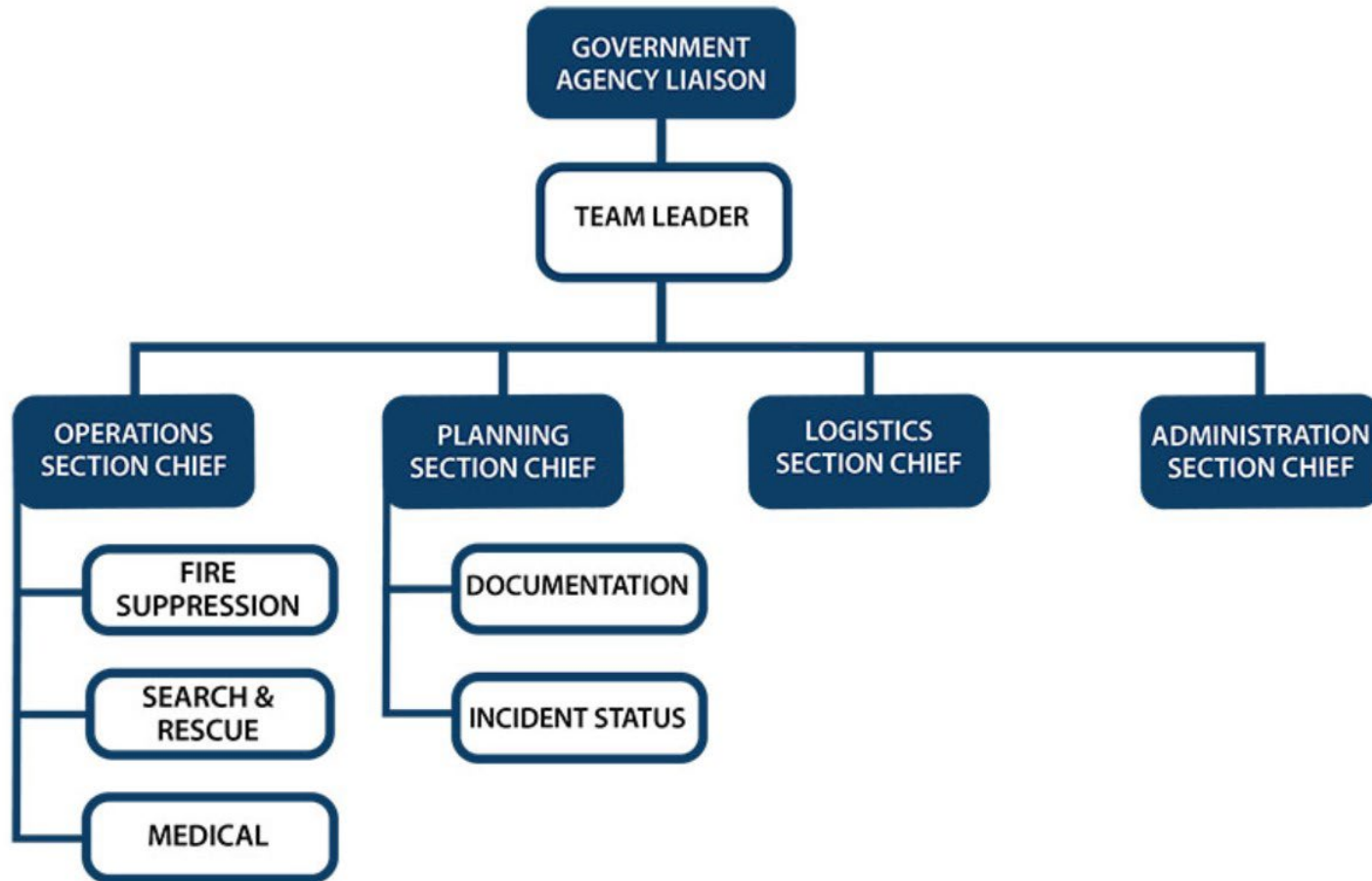
- Disaster Preparation
- CERT Organization
- Disaster Medical Operations
- Disaster Psychology
- Fire Safety & Utility Controls
- Light Search & Rescue
- Terrorism and CERT





# CERT Program (cont'd)

## CERT Function Organization Chart



# Evacuation Stair Chair Training

## What does it look like?



# Evacuation Stair Chair Training (cont'd)

- Trainings via UCLC and in-person

UCI Learning Center SELF

Learning Search

Home Timeline Library

Back to Search Results

TOPIC  
**EVACUATION STAIR CHAIR TRAINING**  
ATTENDED

Progress: 100% REGISTER AGAIN

Attempt History

Evacuation Stair Chair Training

1. Evacuation Stair Chair Training: Part ...

2. Evacuation Stair Chair Training: Part ...

DETAILS ACTIVITIES SIMILAR ACTIVITIES

Full Description

Evacuation Stair Chair Training is a 2-Part course (eCourse + a 30-minute hands-on training) that covers how to safely use the Stryker Evacuation Stair Chairs for staff/faculty/students. Part 1 is required to receive credit. Part 2 is offered for individuals who schedule a 30-minute time slot to do hands-on training at their location so they can see where it is in their building. It's not required, but an optional course for those who are interested.

To register for Part 2, sign up via this link to book a 30-minute time slot: <https://doodle.com/bp/shaneobrien1/evacuation-stair-chair-training>



# Damage Assessment Overview

---

- Developed to provide the EOC with a quick snapshot of the damage after a disaster
- It is **not** meant to take the place of a work order
- Will only focus on the exterior of the building or areas around the campus
- Should be completed using a cell phone for most accurate location
- Will provide a link to submit an actual work order afterwards

# Emergency Response Procedures

## UCI EMERGENCY RESPONSE PROCEDURES



### ACTIVE SHOOTER

- **RUN:** Quickly and cautiously evacuate in a direction away from the attacker. Seconds matter, be aware of alternate exits wherever you go.
- **HIDE:** If you can't escape, find a good hiding place. Lock and barricade the door. Silence cell phone. Look for chances to escape. Call or text 9-1-1.
- **FIGHT:** As a last resort, fight. Use improvised weapons, teamwork and surprise. A coordinated ambush can incapacitate an attacker.



### EARTHQUAKE

- If you are inside:
- **DROP, COVER, and HOLD ON** until the shaking stops.
  - Avoid windows, filing cabinets, bookcases, and heavy objects.
- If you are outside:
- Move away from trees, buildings, electrical poles, and wires.
  - Protect your head with your arms.
  - Proceed to the closest assembly area.



### EVACUATE

- In the event of a fire, a life safety emergency or when the fire alarm activates, either audible and/or visual, evacuate the building.
- Stay calm. **DO NOT RUN.**
  - **DO NOT USE ELEVATORS.**
  - Proceed to the nearest safe exit.
  - Proceed to an assembly area.
  - Locate your supervisor or colleagues to report your accountability.
  - **DO NOT** return to an evacuated building until an all-clear message is given.



### FIRE

- Remember **RACE**:
- **Remove:** Evacuate and alert others in your area.
  - **Alarm:** Activate fire alarm if not already present. Call or text 9-1-1 from a safe area.
  - **Contain:** Close doors behind you as you evacuate, **DO NOT LOCK.**
  - **Extinguish or Evacuate:** Extinguish the fire if it is safe to do so and you have been trained. Or, evacuate the area immediately.
  - **DO NOT** open doors if they are hot.
  - If smoke is present, stay low.



### HAZARDOUS MATERIALS

- Safety first. Minimize exposure. Keep a safe distance between you and the hazard.
- Isolate scene. If safe to do so, close area door to reduce the potential for spreading and deny entry.
- For medical attention, call or text 9-1-1.
- During normal hours, 7:30 a.m.-4:30 p.m., call UCI Environmental Health & Safety 949-824-6200.
- After hours, call or text UCI Police Department 9-1-1.



### EMERGENCY INFORMATION

- For more information during or after an emergency:
- Visit [emergency.uci.edu](http://emergency.uci.edu)
  - Social media at [twitter.com/ucirvine](https://twitter.com/ucirvine), [instagram.com/ucirvine](https://www.instagram.com/ucirvine), or [facebook.com/ucirvine](https://www.facebook.com/ucirvine).
  - Tune into Zot Radio AM1690 or KUCI 88.9FM.
  - Sign up for zotALERT at [oit.uci.edu/zotalert](http://oit.uci.edu/zotalert).
  - For more emergency response procedures scan QR code or go to [em.uci.edu](http://em.uci.edu).



- Printable, 8.5" x 11"
- Snapshot of the most prominent emergencies
- QR code to access more information and emergency response procedures
- Replaces existing Red Flip Chart
- Coming soon, printable, 11" x 17" building Emergency Action Plan for departments with zone and assembly area information
- Coming soon, printable 11" x 17" Classroom Emergency Procedures with zone and assembly area information

Revised 11/2022

UCI Emergency Management



# Suggestions Feedback Form

---



**Questions?**